



Issue No  
28

7th October 2021

### Important Dates:

**Thursday 7th October**

School closes 1.05pm

Opening Evening

6pm - 9pm

**Friday 8th October**

Inset Day

School Closed

**Wednesday 13th October**

Year 10 and 11 Help

your child to Revise

evening

**Wednesday 20th October**

Year 10

Parents' Evening

**Friday 22nd October**

School closes for half

term

**Monday 1st November**

School re-opens

### REMEMBER

If your child tests positive on a Covid lateral flow test, or a PCR (laboratory) test, please notify the school on [admin@millfield.lancs.sch.uk](mailto:admin@millfield.lancs.sch.uk).

Thank you.

Email [admin@millfield.lancs.sch.uk](mailto:admin@millfield.lancs.sch.uk)

Website: [www.millfield.lancs.sch.uk](http://www.millfield.lancs.sch.uk)

Twitter page @millfieldhighsc

#BeExceptional

#TeamMillfield



# Millfield MESSENGER

Belvedere Road, Thornton Cleveleys, FY5 5DG

Telephone 01253 865929



Dear Parents and Carers

It has been a superb start to the new academic year, and I have shown many prospective families around our exceptional school – they have all been incredibly impressed by your children at work and enjoying their lessons! On Friday we had a visitor from another school, who spent the day observing lessons. In the afternoon we went for a tour of the school, watching lessons, and he commented on how calm the school was, and how our students are amazing because they just want to learn and do well.

Our school priorities this year remain firmly focused on teaching and learning; we are committed to ensuring your child is stretched and challenged in all of their lessons; that they have recall and retrieval opportunities of prior learning (to ensure they are learning to remember more and do more) and our teachers continue to meet and collaborate, working together to develop their teaching practice. At Millfield, we hold firm the idea from Dylan William: "If we create a culture where every teacher believes they need to improve, not because they are not good enough but because they can be even better, there is no limit to what we can achieve."

So far, we have had 85 Year 10 and 11 parents sign up for our How to Help Your Child Revise evening, which will be delivered by our senior team. We are really looking forward to meeting with our families and sharing tips and ideas for supporting their child over their GCSE years.

Mr Smith and our team of teachers have delivered RSE (Relationships and Sex Education) lessons so far to our Year 7 and 11 students. These days are planned from Year 7 to Year 11 and if you would like to know what your child is learning, please refer to the PSHE learning journey on the school's website. The feedback from our students is always incredibly positive about these lessons and the students tell us that they learn a lot, in the safety of small classes, with teachers they trust.

It is great to see all the clubs up and running again across the school. A special mention must go to Erin Jones, in Year 10, who has started our first Welsh Club at lunchtime! Erin had around ten eager students join her club last week, where they learned the basics of introductions and numbers.

We have had an incredible 50 new followers on our school Twitter – this has grown by over 1000 followers in the last couple of years! We use Twitter to celebrate our school and remind parents of upcoming events, you can follow us at @millfieldhighsc.

Best wishes

*N. Regan*

Nicola Regan

Headteacher

# Be Exceptional!

MILLFIELD

SCIENCE & PERFORMING ARTS COLLEGE

YEAR 7  
FORM GROUP CHALLENGE

Winning House :

BRONTE'S  
Bears



# KEY STAGE YEAR 7

# 3

Year 7 students have made an excellent start to Millfield. It is fantastic to see the learning atmosphere around school with the Year 7 students really engaged in their schoolwork. The students in Year 7 have settled in well to their new form groups and have already enthusiastically participated in the Sports Day, held in September, and the House Challenges, winning house points for their team.

Thank you to parents who attended the Year 7 Tutor Evening on 30<sup>th</sup> September. It was nice to see parents attending and starting a partnership between school and families.

The parental survey that was taken after the Year 7 Tutor Evening gave us some very positive feedback. An overwhelming majority of parents said that "Millfield has high expectations for my child" and the vast majority agreed that "My child does well at Millfield". For any further questions or concerns, please contact your child's Form Tutor. E-mail addresses can be found on the school's website.







# KEY STAGE 3

## YEAR 8

### EXCEPTIONAL AWARDS

This week saw the official launch of the Exceptional Awards 2021. Each Year 8 student will now have received their Exceptional Awards booklet and should be familiarising themselves with the expectations and tasks involved in the award.

The Exceptional Awards Programme is a highly successful, motivational programme which is unique to Millfield. It draws together many elements of school life including students' effort, progress, behaviour, punctuality and attendance. Students can also be awarded points for their contribution to the school or wider community.

In order to be successful, students must achieve:

- at least 97% attendance throughout the academic year;
- have an exceptional behaviour for learning score;
- complete several subject challenges within the booklet:

There will be a review of graduation data regularly, and if your child is in danger of not meeting the criteria required to graduate, you will be contacted. We have a range of strategies in place to support those children who need extra help in order to be successful.

The aim of the Exceptional Awards Programme is to help create a Year 8 identity, instil a sense of achievement and success, and enable us to identify those who really need extra support to develop the key skills required throughout, and beyond, school life.

We look forward to rewarding your child for their hard work and dedication throughout the year.

Mr. D. Booth  
*Head of Aspirations*

<b>Pass</b> 55+ Subject Challenges <i>This means you will get a certificate and a graduation picture.</i>	<b>Merit</b> 60+ Subject Challenges <i>This means you will be put into a draw to attend the Graduation Party.</i>	<b>Distinction</b> 65+ Subject Challenges <i>This means you will attend the Graduation Party.</i>	<b>Distinction*</b> 75+ Subject Challenges <i>This means you will get a special award and attend the Graduation Party.</i>
---	---	---	--



# KEY STAGE 3

## YEAR 9 GRADUATION

After the launch of the Year 9 Graduation, I have been really excited to see what the students have produced and how they have challenged themselves to be exceptional.

On a weekly basis, students should be completing two subject tasks. When completed, the students should bring in the work to be stored by their form tutor and then signed off. For tasks which do not need completing on paper, a photo should be taken and, if possible, printed off and stored in the folder in school.



As a reward the students who have completed the subject challenges, have 100% attendance and not lost any BFL points, will be placed in a prize draw to have lunch at

Pizza Hut at the end of November. The 8 winners will be able to choose a friend to accompany them and they will be taken to enjoy a buffet lunch. More details will follow over the next few weeks.

***“Do not Focus on the Pain, Focus of the Progress”. Dwayne Johnson.***

Mr. R. Smith  
Head of Personal Development



As a school, we are really excited this week to choose this year's Student Council. This year, each year group will have 5 students in different roles representing the school. The roles are: Leader, Deputy, Treasurer, Charity Officer and Committee Member. Students have been asked to put themselves forward by creating a PowerPoint slide stating why they want to be on the Student Council, which role they wish to have and what they want to achieve in the role.

We have had an excellent response with many students putting themselves forward. The students will now be placed into a 'first past the post' election and be voted in by their peers.

Promoting British values is extremely important at Millfield and we believe in preparing our students for life in modern Britain. We believe having an election will allow students to experience voting later in life and they will see the importance of deciding who makes the decisions on the issues they care about.

We wish all students who have put themselves forward luck in the election and cannot wait to work with them on making Millfield even more exceptional.

# KEY STAGE 4



The past two weeks have been another successful fortnight for Key Stage 4 students. Whilst Year 10 students continue to organise their work experience, last week in assembly.



Year 11 heard from Helen Thornley from Blackpool Sixth Form about what the college has to offer and how to apply to different courses.

This week's assembly was from Mr Waterhouse at AKS who told students about the opportunities and scholarships available at their sixth form.



In future weeks we will hear from Blackpool and Fylde College, Myerscough and Rossall.



All of the colleges have now opened their applications for 2022 and it is important that students start attending open events hosted by providers and applying to their chosen venue. Students can apply to more than one provider and can change their application once it has been submitted.

Our senior students are currently working on several projects. They have recently organised the prefect rota and will shortly be sending out a student voice questionnaire to all students. In addition to this, they are attending an equalities working party and organising charity events for Christmas.



Miss Gower  
Head of Key Stage 4



**Wednesday 13th October:  
How to help your child to revise  
evening.**





## Deputy Headteacher's Maths Challenge



Well done to Marcus Wright and Isabel Daniells for their solutions. Isabel correctly identified that the maximum area for a rectangle with a perimeter of 30 cm would be  $7.5 \times 7.5 = 56.25 \text{ cm}^2$ .

Did you know that a square is also a rectangle?

The challenge for this week:

How many squares are there on a chess board?



Can you work out a rule that connects the size of the board with the number of squares?

Please email your solutions to Mr Humphreys at: [b.humphreys@millfield.lancs.sch.uk](mailto:b.humphreys@millfield.lancs.sch.uk)

### WORK EXPERIENCE



#### Year 10 Work Experience 2022

The dates for the Work Experience will be **21st March – 1st April 2022**

Please assist by talking to your child about work experience and support them with questions they may have.

**Outstanding medical forms need to be returned as soon as possible.**

**Self Placement forms are due back on 8th December 2021**

### HOT CHOCOLATE WITH THE HEADTEACHER

#### Year 9

- Olivia Cope
- Emily Thistleton
- Jayden Whittaker
- Billy Harrison
- Jasmine Allen
- Charlie McIntyre

All of the students have been nominated by Mr Cox for their excellent work in Science.

Be Exceptional!

### DATES FOR 2021/2022

- Y10 & Y11 Revision Evening - 13th October 2021
- Y10 Parents' Evening - 20th October 2021
- Y9 Parents' Evening - 10th November 2021
- Mock Exams - 22nd Nov - 3rd December 2021
- Parents' Forum - 8th December 2021
- Carol Service - 14th - 16th December 2021
- Mock Interview Day - 19th January 2022
- Y11 Parents' Evening - 26th January 2022
- Celebration of Music - 7th March 2022
- Y7 Parents' Evening - 23rd March 2022
- Y8 Parents' Evening - 18th May 2022

### Are you ready for the school day?

Don't forget to test twice weekly at home using your lateral flow test home kit.

Around one in three people with COVID-19 do not have symptoms but can still pass it on to others. Regular testing of people without symptoms (asymptomatic testing) is important to help stop the virus spreading.

### REMEMBER

If your child tests positive on a Covid lateral flow test, or a PCR (laboratory) test, please notify the school on [admin@millfield.lancs.sch.uk](mailto:admin@millfield.lancs.sch.uk).

# Home - Learning

## Home learning doesn't have to be a nightmare

It's normal for your child to need some help getting used to the greater burden of home learning when they start secondary school, and you'll need to make sure you know what they're supposed to be doing, chivvy them along when needed, and help them manage their time so it all gets done.

## Here are a few tips to make the process an easy one:

### Discuss home learning

Give your child a chance to talk about their schoolwork if they want to. Even if you know nothing about a particular subject, you can still help just by talking and listening and helping them to find their own answers.

### Encourage

Help your child take responsibility for organising and doing their home learning and never forget to praise them for their hard work or their improved concentration, handwriting or presentation.

### Help your child keep to a routine

Some children prefer to do home learning straight after school, whereas others prefer to 'unwind' first, or have their meal then do home learning later. Let your child decide – but ensure they stick to it.

### Establish a study zone

It's very important to try to create a suitable place where your child can do their home learning, ideally somewhere with a clear work surface, good lighting and no interruptions. Try to teach younger brothers and sisters not to interrupt when home learning is being done.

### Allow for differences

Children are all different and have different learning styles. Some prefer to study alone, whereas others like to study with friends or family. It's worth remembering that some children like to work with music on to keep them company, too.

Here at Millfield we celebrate excellence and home-learning is no exception:-

Congratulations go to Penny Atkinson in Year 8 who produced an outstanding piece of home learning in Mathematics in which she worked hard on solving questions on direct proportions.

The image shows a student's completed homework on direct proportions. The page is titled "Solve problems involving direct proportion". It contains several math problems and their solutions. The student has used tables to solve the problems and has handwritten notes in red ink. One note says "You have calculated the amounts correctly using direct proportion". Another note says "What does 1kg mean? 1000g". The problems include: 1) A shop sells school supplies, 2) Pencils are sold in boxes, 3) Three boxes of rulers contain 150 rulers altogether, 4) Complete these recipe cards, and 5) How many boxes do you need to buy to have 1,500 rulers? The student has used tables to solve these problems and has checked their answers.

## Reminder

In order to support your child with their home learning, please regularly log into Talaxy to monitor the tasks that have been set and remind your child to complete them. The home learning policy can be viewed on our school website; this explains how much home learning your child should be set each week and the types of tasks they could be set. If you require any further information about our home-learning or how to register for Talaxy, please visit the school's website: -

<http://www.millfield.lancs.sch.uk/parents/online-parental-reporting/>

Mr. G. Wood

Lead Practitioner of Teaching and Learning (Technology).



# NCS CHAMPION SCHOOL 



# MILLFIELD

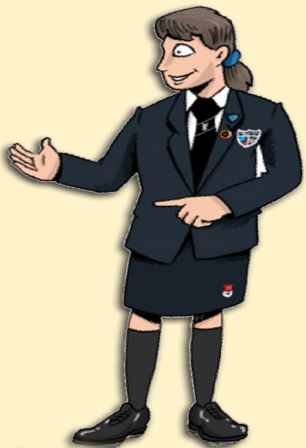
**SCIENCE & PERFORMING ARTS COLLEGE**  
BELVEDERE ROAD, THORNTON CLEVELEYS, LANCASHIRE, FY5 5DG

**OPEN EVENING**  
7<sup>TH</sup> OCTOBER 6PM

**VIRTUAL OPENING EVENING  
AVAILABLE NOW VIA OUR WEBSITE!**  
WWW.MILLFIELD.LANCS.SCH.UK

Be Exceptional

01253865929    ADMIN@MILLFIELD.LANCS.SCH.UK    @MILLFIELDHIGHSC



## Eithriadol

Well done to Erin, who started our first Welsh Club held at lunchtime. Erin had 10 eager students all ready to learn!

[#TeamMillfield](#)



# Teaching and Learning Tips

### The power of growth mindset.

Year 7 students recently had an assembly about the power of growth mindset. We looked at Takeru Kobayashi, “the godfather of competitive eating”. Kobayashi’s story showed us that if you refuse to place a limit on your ability, work hard and plan for success, you can achieve whatever you set your mind to. Kobayashi wasn’t put off when people doubted him and he refused to compare himself with the other competitors. He focused on his own goal by planning, reviewing and improving wherever possible until he was world champion.



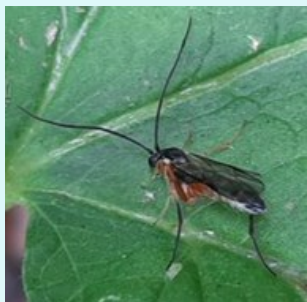
If we follow Kobayashi’s example, we too can enjoy success by harnessing the power of growth mindset in our learning at school and at home.

Miss J. Copping  
Lead Practitioner of Teaching & Learning (Foundation Subjects).



# It's a bug's life

In September, my little boys and I did a bug hunt in our garden. We spotted lots of different insects, but were upset to see no spiders (although there are plenty making a home for themselves in our house!) We took some photographs and asked for help identifying some of them from an online group of bug fans. We weren't able to get names for the little flies, so if you know what they are then please let us know.



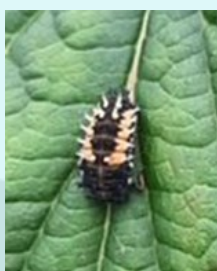
*Ichneumonidae sp.*  
parasitoid wasp



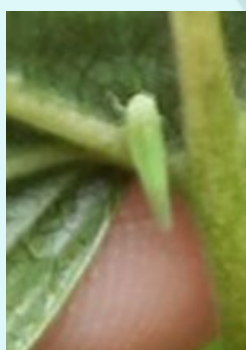
Possibly  
*Oniscus asellus*  
(Common) Woodlouse



*Pararge aegeria*  
Speckled wood butterfly



*Harmonia axyridis*  
Harlequin Ladybird larvae (invasive species)



Unknown fly



Unknown fly



*Palomena prasina*  
Young Common green shieldbug (1st instar)



*Palomena prasina*  
Common green shieldbug



*Acanthosoma haemorrhoidale*  
Hawthorn Shieldbug

So step out into your garden and do a bug hunt before they all run and hide from the cold weather. If you can, get some photographs and share them with us on Twitter. It would be great to see what bugs there are throughout the local area.

Mrs McCaffery

# Pastoral and Wellbeing



We've had a brilliant few weeks back and the behaviour of the students has been exceptional. The inter-house competitions have started well with Rhinos winning Sports Day, Bears winning the Year 7 morning challenge and Hawks winning the Year 8 competition too!

The new form timetable has started having a positive impact and it was nice to hear that Vittoria (our welfare assistant) has received FIVE cards off students, thanking her for her tireless work keeping the school clean.

We are excited to work with the local Mayor, Andrea Kay, supporting students with positive mental health and are excited by the launch of the new LGBT group to support students. As the world is a very different place to what it was 20 years ago and it seems to be evolving at an ever increasing pace, there are so many new terms that you may not feel confident in using. In this edition of the Millfield Messenger I thought I would share the following to support parents when talking about LGBTQ+ as the terminology of gender and sexuality changes so fast that finding the right words can be a minefield. This glossary is designed to get you started. We have added parentinfo.org to our school website to give you information on a range of topics.

## What does LGBTQ+ mean in the first place?

LGBTQ+ stands for lesbian, gay, bisexual, transgender and queer (or questioning) and others. You might also see it written as LGBTQA, with the A signifying either ally (i.e. supportive) or asexual. All the variations on the acronym refer to a community of people who share some experiences:

- ◆ Bisexual (or bi) – someone who is attracted to their own gender and another.
- ◆ Coming out – the process of accepting one's own sexual orientation or gender identity and/or sharing it with others. It is possible to be 'out' to yourself, to everyone or only to certain people – for instance, some people choose to come out to their families and friends but not their teachers or co-workers.
- ◆ Gay – someone whose attractions are exclusively or almost exclusively same-gender. While anyone can identify as gay, the term tends to be associated more with men than with women (who may also identify as lesbian).
- ◆ Gender binary – the system of dividing gender into two distinct categories, male and female. Someone is binary-identified if they feel comfortable categorising themselves as one of these two options and non-binary identified if they do not (e.g. a transgender man who keeps his original – female – name and doesn't live completely as a man or woman).
- ◆ Gender nonconforming – a person who behaves or identifies in ways considered atypical for their gender.
- ◆ Genderqueer – sometimes used to describe people with non-binary gender identities.



- ◆ Pansexual – a person who is attracted to all genders. Some people prefer the term pansexual to bisexual because pansexual does not assume a gender binary.
- ◆ PGPs – Stands for preferred gender pronouns. Examples include she/her/hers, he/him/his and they/them/theirs. Some people might prefer a mix of pronouns and increasingly some people are using less traditional gender-neutral pronouns like zie or hir.
- ◆ Queer – One of the most complicated terms on this list! Queer is often used as a synonym for LGBTQ+, or as an umbrella term for the entire community. Some LGBT people also use it to describe their own sexual orientation. But it's important to note that queer was once considered a derogatory term for LGBT people. Many people within the community think the word has been reclaimed, but it may still be offensive to some – especially people from older generations. It's one of those words that it's easier for people inside the community to use than outside it. It's probably best not to describe someone as queer unless you're sure they are comfortable with it.
- ◆ Transgender (or trans) – Typically refers to anyone whose gender identity does not align with their assigned sex and gender at birth. Some trans people are binary-identified, others are not.

LGBTQ+ people won't all feel exactly the same way about every word on this list, so it's important to be sensitive. For parents, it can be confusing or difficult when your child identifies in a way you don't fully understand – but the most important thing is to emphasise that you love and respect them unconditionally.

**Mr. Deaville**  
**Assistant Headteacher in charge of Behaviour and Safeguarding**





*Be Exceptional!*

