

MILLFIELD'S Health and Social Care

LEARNING JOURNEY



- Health and Social Care BA Hons degree Top up
- Health and Social Care foundation degree
- Health (adult nursing) – T Level
- Health practitioner Pre T Level
- Health and Social Care+ Behaviour Management - Level 2
- Awareness of Dementia – Level 2
- Helping skills – Level 2
- Health Care Worker - advanced apprenticeship
- Health Care Worker – Intermediate apprenticeship
- Adult Care Worker – Intermediate apprenticeship

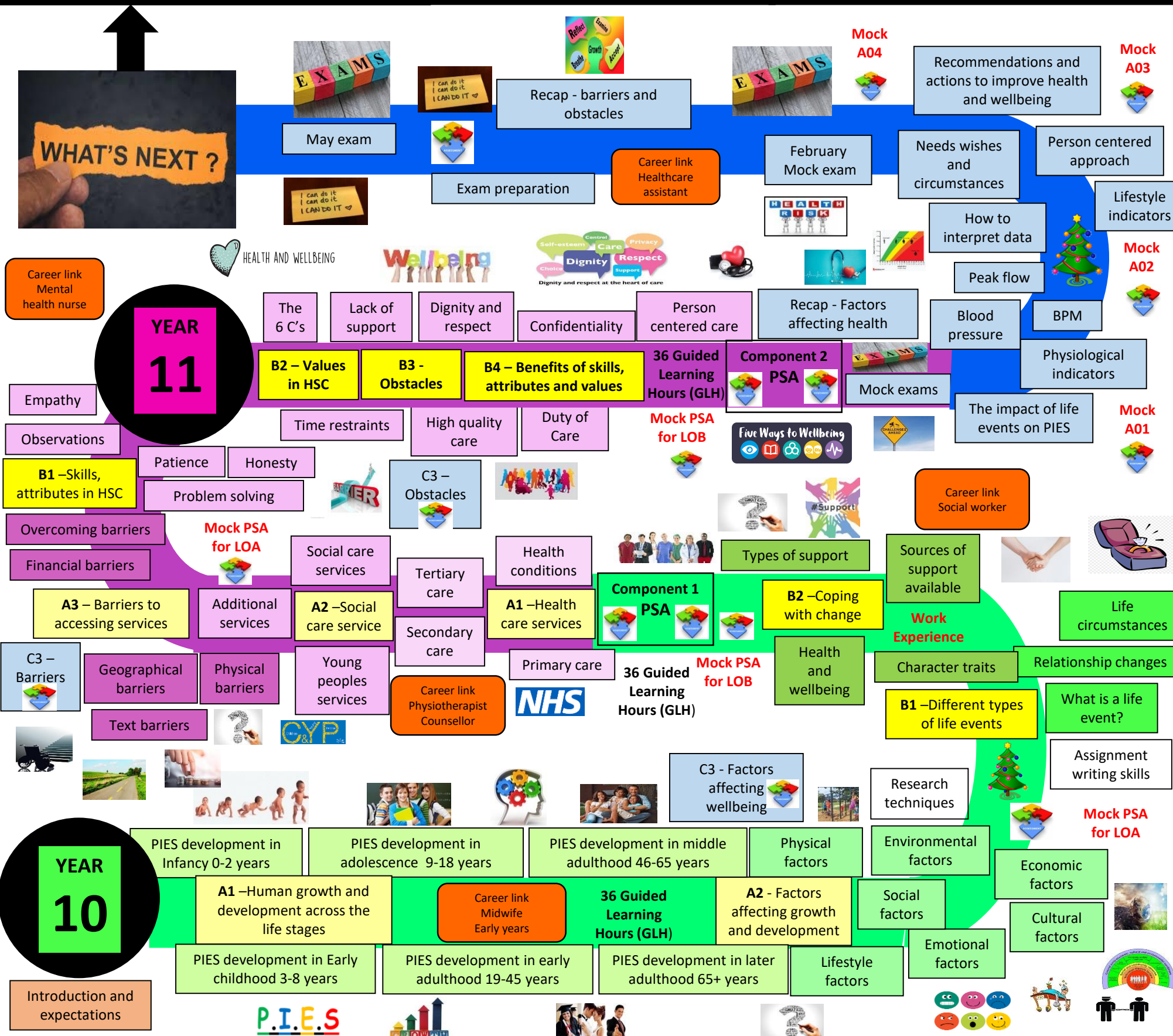


- BTEC Level 3 National Diploma in Health and Social Care - Nursing and Cadetship (Triple)
- BTEC Level 3 Health and Social Care – (Double)
- BTEC Level 2 Certificate in Health and Social Care (Route 3)

"Commit yourself to lifelong learning. The most valuable asset you'll ever have is your mind and what you put into it." (Brian Tracy)

Some HSC career pathways

- | | |
|----------------------|------------------------------|
| Healthcare Assistant | Teaching Assistant |
| Carer | Residential Childcare worker |
| Social Worker | Primary Teacher |
| Nurse | |
| Midwife | |
| Paramedic | |
| Support Worker | |
| Youth Worker | |
| Radiographer | |
| Physiotherapist | |
| Lecturer/teacher | |



Aim
This subject offers students the opportunity to learn about those around us – the growth and development of the different life stages of humans and the many factors that affect these. It is particularly suited to those that wish to enter into the caring professions e.g.; education, social work, nursing, midwifery, counselling etc. It aims to give students the necessary life skills to make a difference in people's lives.

Teaching and Learning
A wide variety of teaching strategies are used in Health and Social care to make the lessons fun, challenging and informative. Individual theory, group work, role-playing and practical sessions, using ICT, research and application to real-life case studies all help make the subject more real for the students. Current health and social care issues in the news are discussed in class to encourage an opinion and provide background knowledge for course work.

Assessment for Learning
Students are assessed at regular intervals throughout the year and given both verbal and written feedback according to the task. Pupils are encouraged to self-assess and peer mark work where appropriate, setting individual targets. Chances are given for reflection and improvements to be made to work.

Home Learning
A variety of homework is set on a regular basis to reinforce classroom learning. This may include research, interviews or applying your knowledge to case studies. Synergy – all home learning activities will be published by individual staff members on 'Synergy' which can be found by following the link on the school's homepage.



A JOURNEY TO BEING EXCEPTIONAL

